

65 Inch Smart Interactive Display

MW3565-U-E2



Features

- 4K UHD anti-glare display delivers images with extreme detail.
- Zero lamination technology with less than 1mm gap between the cover glass and display panel effectively reduces light refraction and brings better visuals.
- Ultra-narrow and equal-width bezel design for perfect aesthetics.
- Minimalist geometric line design and smooth border outline, elegant and attractive.
- (Optional) Professional 4K HD camera for immersive remote collaboration.
- (Optional) Omni-directional 8-microphone array with 8-meter pickup distance.
- Dual Wi-Fi modules with both Wi-Fi and hotspot support for other mobile devices.
- Dual treble channels and dual bass channels provide cinematic sound effects.
- High-precision infrared touch technology allows up to 50-point touch, realizing smooth co-authoring.
- Bluetooth 5.2 offers higher data transmission rate and lower power consumption.
- Android 13.0 system offers user-friendly GUI.
- A variety of quick tools improve usability and interaction efficiency, such as annotation, screenshot, etc.
- Wireless screen mirroring from various operating systems such as Android, iOS, and Windows to the display with one touch.
- Fast file transfer allows users to quickly transfer files to the display via a QR code.
- OTA remote upgrade allows the system to be upgraded online.
- Supports NFC screen projection.

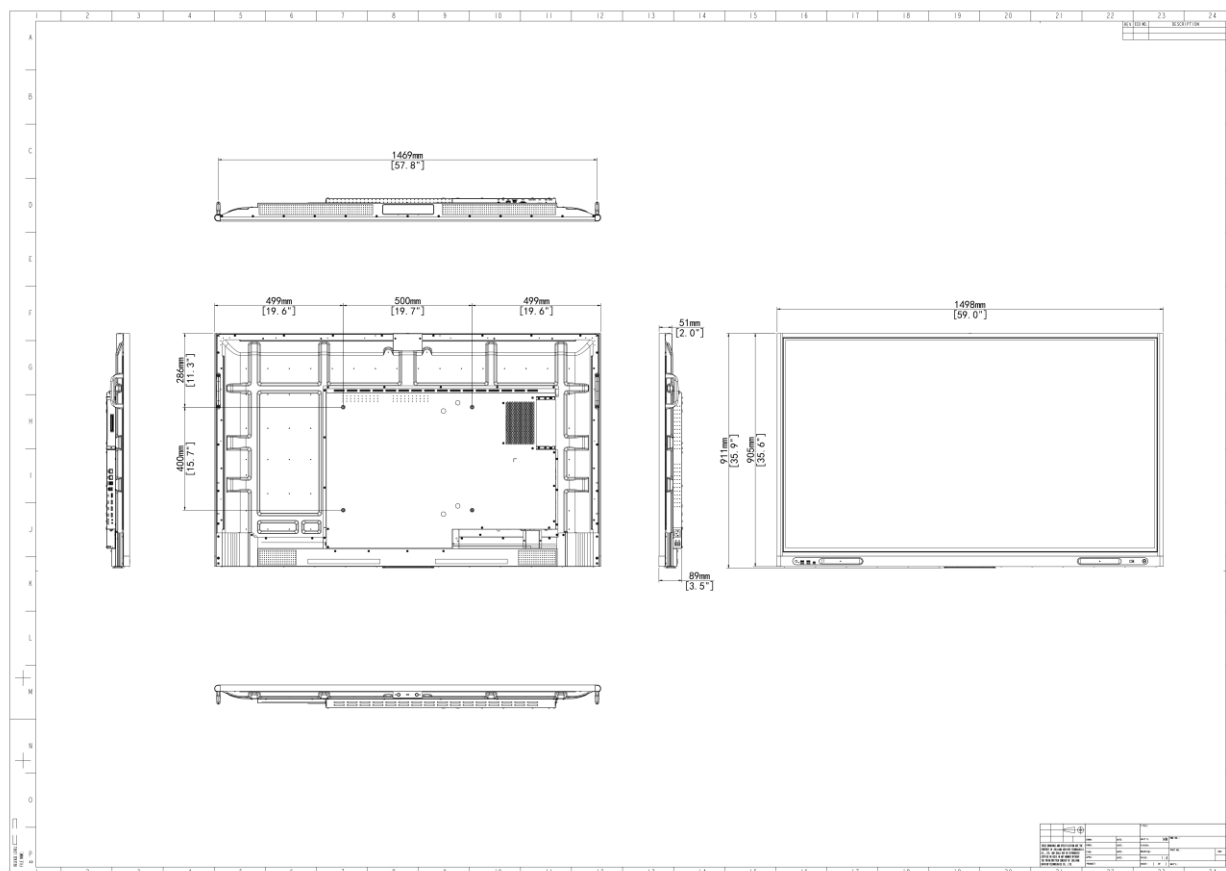
Specifications

Model	MW3565-U-E2
Panel	
Backlight	DLED backlight
Panel Size	65"
Resolution	3840 × 2160
Brightness (cd/m ²)	350
Contrast Ratio	1200 : 1
Response Time (ms)	8
Color Support	1.07B
Viewing Angle (H/V)	178°/178°
Refresh rate (Hz)	60
Color gamut	72%
Lifespan	50000H
Surface Hardness	9H (7 on the Mohs scale)
Haze Value	25%
Display Size (mm)	1428.48 × 803.52
Pixel Pitch (H x V) (mm)	0.37 × 0.37
Touch	
Touch Control	Contactless IR sensor, supports 50-point touch
Touch Precision (mm)	±1
Glass	4mm single-side anti-glare tempered glass
Touch Response Time (ms)	≤ 2 (frame rate > 500Hz)
Touch technology	Infrared touch
Writing Specification	Supports 20-point writing
System	
CPU	RK3588: quad-core A76 (2.4G) + quad-core A55 (1.8G)
CPU Frequency	2.4 GHz
RAM/ROM	DDR4: 8GB eMMC: 128GB
Operation System	Android 13.0

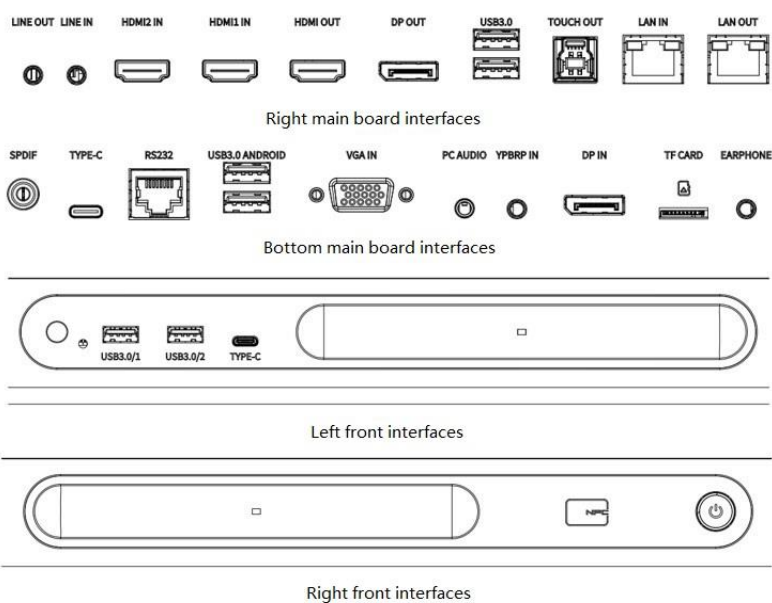
Interface	
Video Input	2 × HDMI 2.0 video input; 1 × DP video input; 1 × VGA video input; 1 × YPbPr video input 1 × USB TypeC (Include DP)
Video Output	1 × HDMI video output; 1 × DP video output
Audio Input	1 × PC audio input, 3.5mm interface 1 × LINE IN, 3.5mm interface 1 × MIC (3.5mm & EARPHONE Shared interface)
Audio Output	1 × Earphone audio output, 3.5mm interface 1 × LINE OUT, 3.5mm interface 1 × SPDIF digital audio output (coaxial interface)
Other Interfaces	4 × USB3.0 1 × USB Type-B 1 × USB Type-C 1 × RS232 1 × TF card slot
Network	2 × RJ45, supports 10M/100M/1000M Base-T self-adaptive
Front Interfaces	2 × front USB3.0 1 × Type-C
Audio	
Speaker	Left channel: 1 × treble (5W) + 1 × bass (12W) Right channel: 1 × treble (5W) + 1 × bass (12W)
Wi-Fi	
Wi-Fi Configuration	Wi-Fi 6 + Wi-Fi 5 dual modules: Wi-Fi 6 for uplink routing; Wi-Fi 5 as AP, supports 2.4GHz and 5GHz
Wi-Fi Performance	30m ² coverage, 20m transmission distance in open space
Bluetooth	
Bluetooth Version	5.2
Bluetooth Performance	10m transmission distance in open space
OSD	

Multi-Language	Supports 27 languages, including Simplified Chinese, Traditional Chinese, English, Japanese, Arabic, French, Spanish (ES-ES), Spanish (ES-MX), Portuguese (ES-ES), Portuguese (ES-MX), German, Italian, Dutch, Polish, Korean, Catalan, Galician, Vietnamese, Bulgarian, Kazakh, Russian, Ukrainian, Thai, Uzbek, Hungarian, Croatian, and Romanian
VESA	
Wall Mount Hole (mm)	500 × 400
Wall Mount Screw	4-M8 screw hole
General	
Power Supply	AC 100 to 240 V, 50/60 Hz
Overall Power Consumption (W)	≤220 (on without OPS)
Standby Power Consumption (W)	<0.5
Product Dimensions (W x H x D) (mm)	1498 × 905 × 89
Package Dimensions (W x H x D) (mm)	1632 × 1081 × 222
Operating Temperature	0 to 50°C
Weight (Kg)	Net weight: 40.5 Gross weight: 49.0
Operating Humidity	10% to 90% (non-condensing)
Storage Temperature	-20 to 60°C
Storage Humidity	0% to 95% (non-condensing)
Accessories Included	1 × Power Cable, 2 × Touch Pen, 1 × Quick Guide, 1 × Infrared Remote Control, 1 × Wall Mount Bracket
Certification	
Certification	CE-EMC, CE-RED, CB/LVD, FCC, FCC-ID

Dimensions



Interface



Ordering Information for Optional Accessories

Model	Remarks
HB-CA08E	Pluggable 4K Camera And MIC Module
HB-7199-MC04	Pluggable MIC Module
HB-7199-TP	Wireless screen sharing dongle
HB-4365	65" to 86" Wall mount
HB-8765-S	65" to 86" Mobile stand
HB-7099-M	I5 Processor Pluggable PC Module(Win11 System is Not Activated)
HB-7099-S1	Pluggable PC module with i7 processor (Windows 10, not activated)
LIS-WIN10-V	OS-Windows 10-1 to 1 license-IoT Enterprise Value version (with i5 processor OPS PC module)
LIS-WIN10-H	OS-Windows 10-1 to 1 license-IoT Enterprise High End version (with i7 processor OPS PC module)
HB-T-FMC	65-86" Smart Interactive Display Mobile Stand
HB-T-TP4K	Wireless Screen Sharing Dongle
HB-T-SPEN	Smart PEN

Ordering Info

Product Model	Description
MW3565-U-E2	65 Inch Smart Interactive Display

Zhejiang Uniview Technologies Co., Ltd.

No. 369, Xietong Road, Xixing Sub-district, Binjiang District, Hangzhou City, 310051, Zhejiang Province, China (Zhejiang) Pilot Free Trade Zone, China

Email: overseasbusiness@uniview.com; globalsupport@uniview.com

<http://www.uniview.com>

©2024-2025 Zhejiang Uniview Technologies Co., Ltd. All rights reserved.

*Product specifications and availability are subject to change without notice.

*Despite our best efforts, technical or typographical errors may exist in this document. Uniview cannot be held responsible for any such errors and reserves the right to change the contents of this document without prior notice.