

86" Smart Interactive Display

MW3586-U-E



Features

- 4K UHD anti-glare display delivers images with extreme detail.
- Zero bonding technology between lcd panel and cover glass brings brighter viewing and smoother touching experience.
- Ultra-narrow and equal-width bezel design for perfect aesthetics.
- Minimalist geometric line design and smooth border outline, elegant and attractive.
- Dual Wi-Fi modules with both Wi-Fi and hotspot support.
- Dual-channel, 6-array speaker brings high-quality surround sound.
- High-precision infrared touch technology allows up to 20-point touch, realizing smooth co-authoring.
- Bluetooth 5.2 offers higher data transmission rate, and lower power consumption.
- 4K UI, mobile-level operation, just like use a mobile phone.
- A variety of quick tools, such as annotation, screenshot, etc., improve usability and interaction efficiency.
- Wireless screen mirroring from various operating systems such as Android, iOS and Windows to the display with one touch.
- Fast file transfer. Allows users to quickly transfer files to the display via a QR code.
- OTA remote upgrade. The system can be upgraded online without backing up data.

Specifications

Model	MW3586-U-E
Panel	
Backlight	DLED backlight
Panel Size	86"
Resolution	3840 × 2160
Brightness (cd/m ²)	350
Contrast Ratio	1200 : 1
Response Time (ms)	8

Color Support	1.07B
Viewing Angle (H/V)	178°/178°
Refresh rate (Hz)	60
Color gamut	72%
Lifespan	50000H
Surface Hardness	9H (7 on the Mohs scale)
Haze Value	25%
Display Size (mm)	1895.04 x 1065.96
Pixel Pitch (H × V) (mm)	0.49 x 0.49
Touch	
Touch Control	Infrared touch screen, 20-point multi-touch at most
Recognizable Object	5 points 2mm
Touch Precision (mm)	±1
Glass	4mm tempered glass, level 7 on Mohs hardness scale, anti-glare
Touch Response Time (ms)	≤10
Touchscreen Input	Opaque objects (e.g. finger, pen, etc.)
Touch technology	Infrared touch
System	
CPU	RK3588: 4-core A76 (2.4G) + 4-core A55 (1.8G)
CPU Frequency	2.4 GHz
RAM/ROM	DDR4: 8GB eMMC: 64GB
Operation System	Android 13.0
Interface	
Video Input	3 x HDMI IN (4K@60)
Video Output	1 x HDMI OUT (4K@60)
Audio Input	1 x AUDIO IN
Audio Output	1 x AUDIO OUT
Other Interfaces	1 x RS232, 3 x USB 3.0, 1 x USB Type C, 1 x USB Type B
Network	2 x RJ 45, 10M/100M/1000M adaptive Ethernet Interfaces
Audio	
Frequency Domain	80 Hz ~ 20k Hz
Speaker	Left channel 17W: 1 x treble (8Ω 5W) + 2 x bass (4Ω 6W) Right channel 17W: 1 x treble (8Ω 5W) + 2 x bass (4Ω 6W)
Wi-Fi	
Wi-Fi Configuration	Wi-Fi6 + Wi-Fi5 dual-module, supports 5G/2.4G
Wi-Fi Performance	30m² coverage, 20m transmission distance in open space
Bluetooth	
Bluetooth Version	5.2
Bluetooth Performance	10m transmission distance in open space
OSD	
Multi-Language	24 (Simplified Chinese, Traditional Chinese, English, Japanese, Arabic, French, Spanish, Portuguese, German, Italian, Dutch, Polish, Korean, Catalan, Galician, Vietnamese, Bulgarian, Kazakh, Russian, Ukrainian, Thai, Uzbek, Hungarian, Croatian)

VESA

Wall Mount Hole (mm)	800 x 400
Wall Mount Screw	4-M8 screw hole

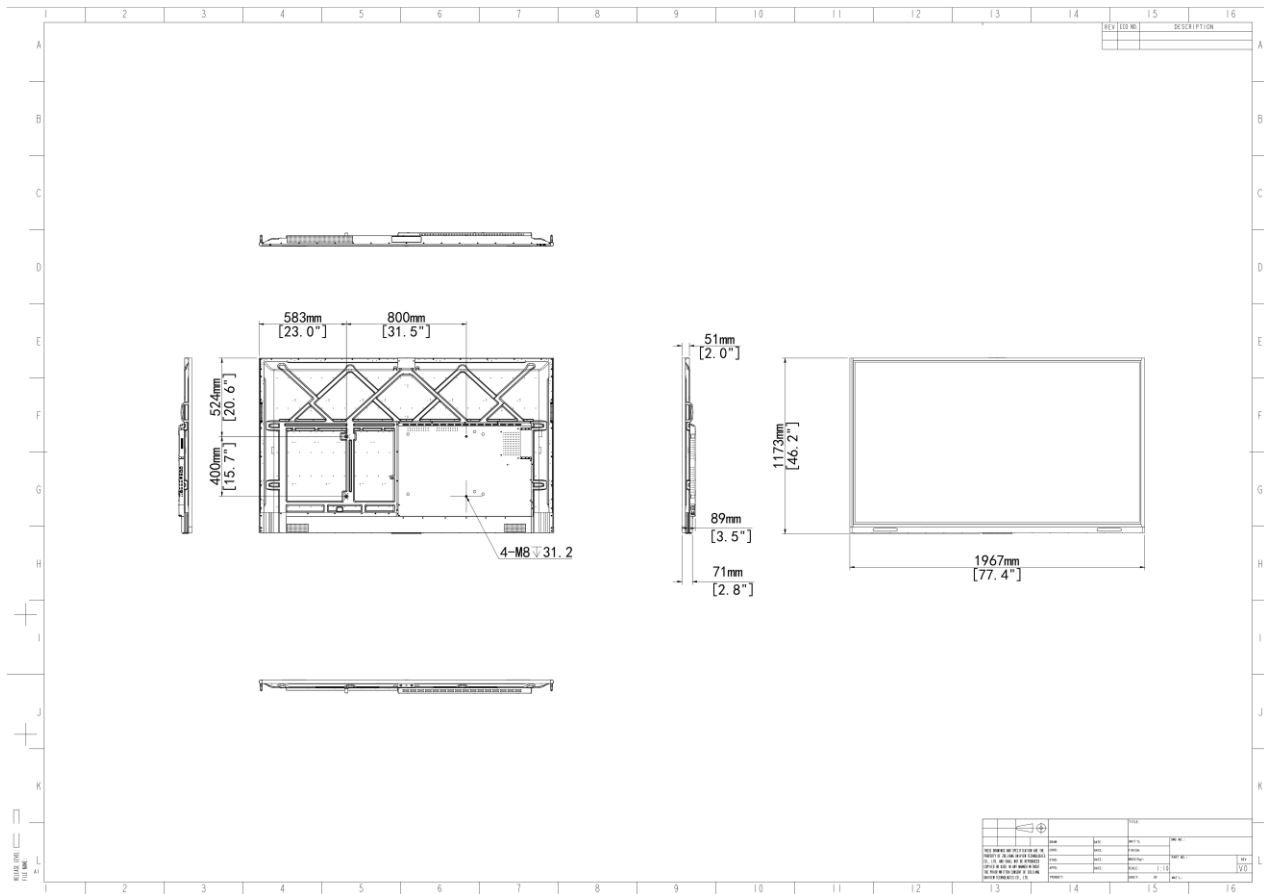
General

Power Supply	AC 100 to 240 V, 50/60 Hz
Overall Power Consumption (W)	≤365 (on without OPS)
Standby Power Consumption (W)	<0.5
Product Dimensions (W × H × D) (mm)	1967 x 1173 x 89
Package Dimensions (W × H × D) (mm)	2117 x 1336 x 247
Operating Temperature	0 to 50°C
Weight (kg)	Net weight: 68.0 Gross weight: 79.2
Operating Humidity	10% to 90% (non-condensing)
Storage Temperature	-20 to 60°C
Storage Humidity	0% to 95% (non-condensing)
Accessories Included	1 x power cord, 2 x touch pen, 1 x quick guide

Certification

Certification	CE-EMC,CE-RED,CB/LVD,FCC,FCC-ID,IC VOC,IC ID
---------------	--

Dimensions

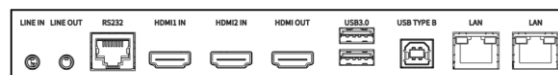


Interface

Front interfaces:



Side interfaces:



Ordering Information for Optional Accessories

Model	Remarks
HB-7199-CA08	Pluggable 4K Camera Microphone Module
HB-7199-MC04	Pluggable MIC Module
HB-7199-TP	Wireless screen sharing dongle
HB-4365	65" to 86" Wall mount

HB-8765-S	65" to 86" Mobile stand
HB-7099-M1	Pluggable PC module with i5 processor (Windows 10, not activated)
HB-7099-S1	Pluggable PC module with i7 processor (Windows 10, not activated)
LIS-WIN10-V	OS-Windows 10-1 to 1 license-IoT Enterprise Value version (with i5 processor OPS PC module)
LIS-WIN10-H	OS-Windows 10-1 to 1 license-IoT Enterprise High End version (with i7 processor OPS PC module)

Zhejiang Uniview Technologies Co., Ltd.

No. 369, Xietong Road, Xixing Sub-district, Binjiang District, Hangzhou City, 310051, Zhejiang Province, China (Zhejiang) Pilot Free Trade Zone, China

Email: overseasbusiness@uniview.com; globalsupport@uniview.com

<http://www.uniview.com>

©2023-2025 Zhejiang Uniview Technologies Co., Ltd. All rights reserved.

*Product specifications and availability are subject to change without notice.

*Despite our best efforts, technical or typographical errors may exist in this document. Uniview cannot be held responsible for any such errors and reserves the right to change the contents of this document without prior notice.